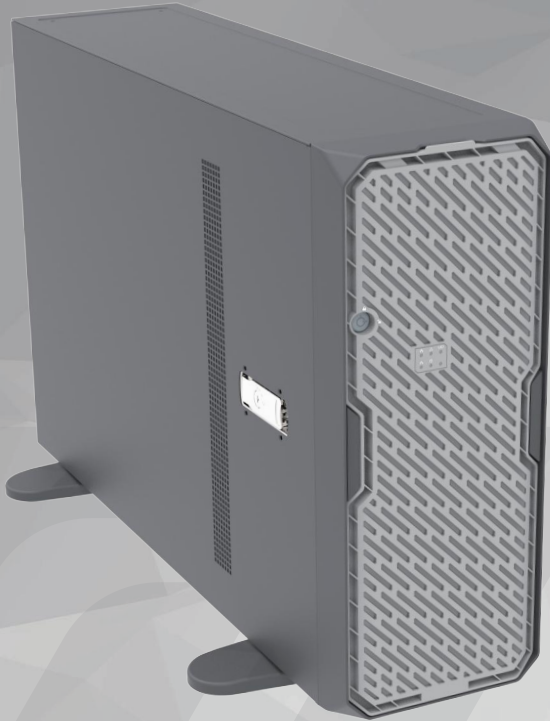


EMPOWERING THE FUTURE
Through Digital Innovation

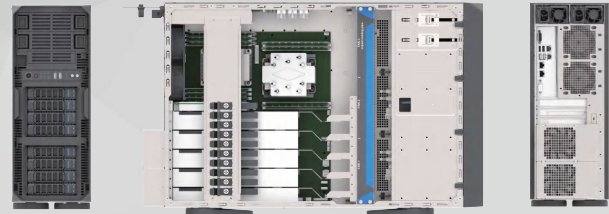
 **ALMORDOR**

WS-SR680



Tower & Rack server >>>

Model	WS-SR680
Motherboard	Proprietary (15.12" x 13.2"): SMC X12DPG/X11DPG
	Proprietary (14.23" x 13.24"): Tyan S7105 SSI EEB (12" x 13"): 8-slot SKU Only
Dimensions	680.0 x 175.0 x 438.0 mm
Storage	External: 2 x 5.25" and 1 x 3.5":
	Hot-swap: 2 x 4-bay 3.5" SAS/SATA Hot-swap Module
Power Supply	Redundant CRPS 1+1,
	Single PSU (PS/2 form factor) for 8-slot SKU Only
Indicator Light	1 x Power Status, 1 x HDD Activity, 2 x LAN Activity, 1 x Power, 1 x UID.
I/O	1 x Power On/Off, 1 x System Reset, 2 x USB3.0, 1 x Audio combo, 1 x Type C
Safety device	Intrusion Switch; Key Lock on Front Door (Option)
Cooler	Middle (Default): 3x 120x38mm, PWM, 1800RPM or 360 water cooler (Option)
	Rear CPU Fan Module for Internal: 2x 80x38mm, PWM, 6300RPM fixed
	Rear GPU Hot-swap Fan for External: 2 x 80x38 (mm), PWM, 6000 RPM (Option)
Expansion Slot	11 x Full Height and Full Length (Up to Double Width 5-GPU Support)
	8 x Full Height and Full Length (Up to Double Width 4-GPU Support, EEB Only)
	Card Retainer: Optional
HDD Backboard	12Gb/s miniSAS-HD
N.W. / G.W.	18KG 21KG



WS-C220W

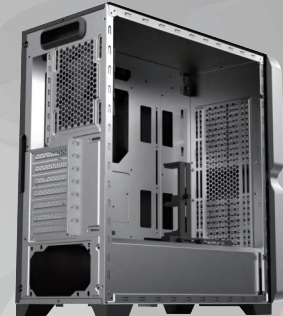


Collapsible handle Design for easy-carry

- Non-obstruction airflow
- 360 radiator support
- E-ATX support
- World-class standard for Government Tender

Tower workstation >>>

Model	WS-C220W
Material	SGCC 0.7mm
Case Type	Tower
Mother board	E-ATX / ATX / M-ATX / ITX
Measurement	485*220*475mm
Storage	3.5"* 2+2.5"* 2
I/O	POWER+Audio+Mic+TYPE-C*1+USB3.0*2
Max. fans	4
Fan Support	Front:120mm*3 / 140mm*2 Rear:120mm*1
Radiator Support	Front:240mm/280mm/360mm Rear:120mm
Max.CPU Height	175mm
Expansion Slots	7
Max.CPU Length	400mm
PSU	ATX 180mm



WS-SR500



High performance Tower & IDC rack server

- Tower & Rack
- 240mm water cooler
- Dual CPU & 4 full-height GPUs
- ATX/CRPS PSU alternative installation
- Optional GPU Bracket for massive computing

Tower & Rack server >>>

Model	WS-SR500
Motherboard	EEB(12"*13")/CEB(12"*10.5")/ATX(12"*9.6")/Micro ATX
Dimensions	500*435*175mm
Storage	Middle: 2*3.5"HDD+1*2.5"HDD,inside:2*2.5"HDD
Power Supply	1+1 CRPS or ATX
Indicator light	1 x Power Status,1 x HDD Activity,2 x LAN Activity
I/O	Power On/Off,System Reset,MIC*1,SPK*1,Type-C*1,USB3.0*2
Safety device	Intrusion Switch
Cooler	Middle : 2x 120x38mm,PWM,1800RPM
	Rear CPU Fan Module for Internal: 1x 92x25mm,PWM,4000RPM
	Front fan internal module: 1x 92x25mm,PWM,4000RPM
	Rear GPU Hot-swap Fan for External:4x80x38(mm),PWM,6300RPM,Hot-Swap
Expansion Slot	8 x Full Height and Full Length
N.W. / G.W.	15KG / 18.8KG



IDC&Rack



Rack Server

WS-SR630

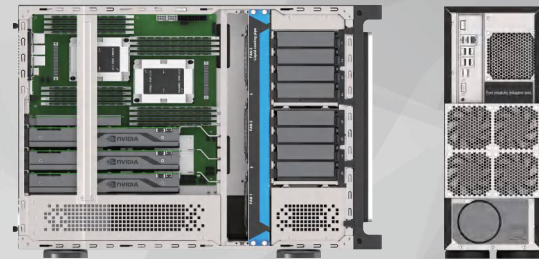


High performance Tower & IDC rack server

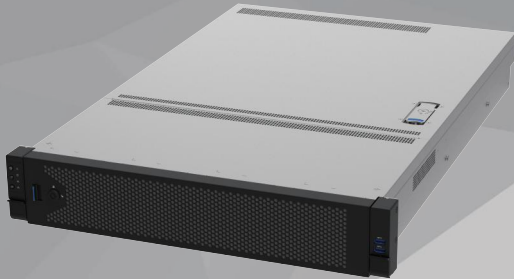
- Tower & Rack
- 360mm watercooler
- Dual CPU & 4 full-height GPUs
- 8+2 Hard disk support
- ATX/CRPS PSU alternative installation
- Optional GPU Bracket for massive computing

Tower & Rack server >>>

Model	WS-SR630
Motherboard	EEB(12 ^{1/2} *13 ^{1/2})/CEB(12 ^{1/2} *10.5 ^{1/2})/ATX(12 ^{1/2} *9.6 ^{1/2})/Micro ATX
Dimensions	630*435*175mm
Storage	Middle: 8*3.5"HDD(Easy to plug and unplug); Inside:2*2.5"HDD
Power Supply	1+1 CRPS or ATX
Indicator light	1 x Power Status, 1 x HDD Activity, 2 x LAN Activity
I/O	Power On/Off, System Reset, MIC*1, SPK*1, Type-C*1, USB3.0*2
Safety device	Intrusion Switch
Cooler	Middle : 3x 120x38mm , PWM, 1800RPM
	Rear CPU Fan Module for Internal: 1x 92x25mm , PWM, 4000RPM
	Rear GPU Hot-swap Fan for External: 4x 80x38 (mm), PWM, 6300 RPM, Hot-Swap
Expansion Slot	8 x Full Height and Full Length
N.W. / G.W.	20KG 23KG



GDO2704



25-bay, 2.5" HDD Cage



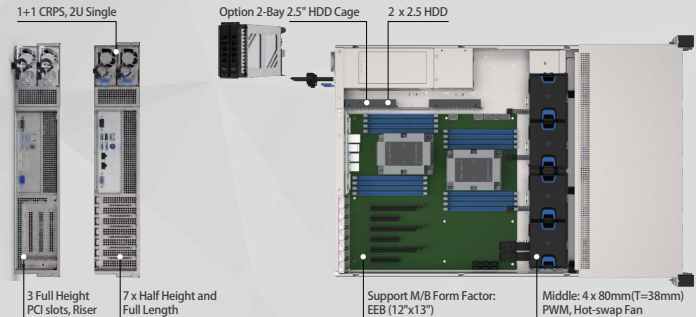
12-bay, 3.5" HDD Cage



8-bay, 3.5" HDD Cage

Rack server >>>

Model	GDO2704
Motherboard	EEB(12"x 13").
Dimensions	660 x 436 x 87(mm).
Storage	Front: 12 x 3.5" Hot-swap, Rear: 2 x 2.5 HDD Rear: 2 x 2.5" Hot-swap(option).
Power Supply	1+1 CRPS, 2U Single.
Indicator light	1 x Power Status, 1 x HDD Activity, 2 x LAN Activity, 1 x UID
I/O	(default) : 1 x Power On/Off, 1 x System Reset, 1 x UID, 2x USB3.0 (option) : 1 x Power On/Off, 1 x System Reset, 1 x UID, 2 x USB3.0+VGA
Safety device	NO
Cooler	Middle(default): 3 x 80mm (T=38mm), PWM, Hot-swap (Option) : 4 x 80mm (T=38mm), PWM, Hot-swap
Expansion Slot	7 x Half Height and Full Length.
HDD Backboard	12Gb/s mini-SAS HD backplane
N.W. / G.W.	15 Kg 18 Kg



GDO2704



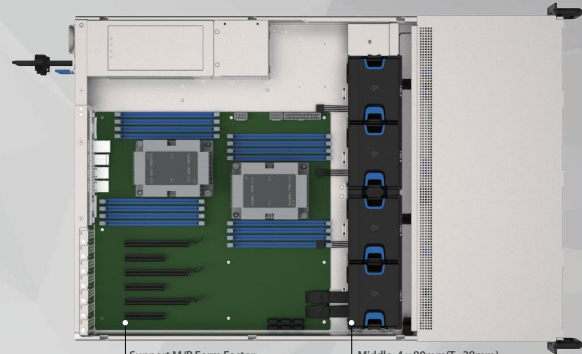
8-bay, 3.5" HDD Cage
1 x USB 2.0+1 x USB 3.0



7 x Half Height and Full Length
1+1 CRPS, 2U Single

Rack server >>>

Model	GDO2704
Motherboard	EEB(12"x 13").
Dimensions	660 x 436 x 87(mm).
Storage	8 x 3.5" Hot-swap.
Power Supply	1+1 CRPS, 2U Single
Indicator light	1 x Power Status,1 x HDD Activity,2 x LAN Activity
I/O	1 x Power On/Off,1 x System Reset,1x USB2.0+1x USB3.0
Cooler	Middle(default): 3 x 80mm (T=38mm), PWM, Hot-swap (Option) : 4 x 80mm (T=38mm), PWM, Hot-swap
Expansion Slot	7 x Half Height and Full Length
HDD Backboard	12Gb/s mini-SAS HD backplane
N.W.	14 Kg
G.W.	17 Kg



Support M/B Form Factor:
EEB (12"x13")

Middle: 4 x 80mm(T=38mm)
PWM, Hot-swap Fan

ZW04702



Rack server >>>

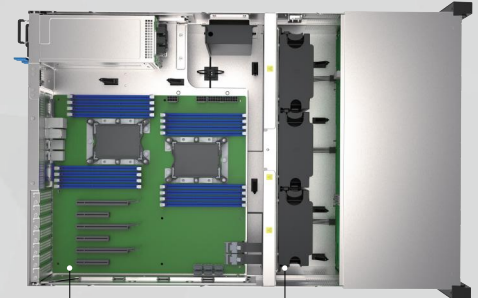
Model	ZW04702
Motherboard	M/B EEB (12"x13")
Dimensions	687 x 436 x 175 (mm)
Storage	36 x 3.5" Hot-swap HDD(3 x 12-bay HDD cage)
Power Supply	1+1 CRPS
Indicator light	1 x Power Status, 1 x LAN Activity, 1 x Health, 1x UID
I/O	1 x Power On/Off, 1 x UID, 2 x USB2.0
Safety device	Intrusion Switch
Cooler	Middle: 3 x 120mm (T=38mm), PWM, Hot-swap
Expansion Slot	7 x Half Height and Full Length
HDD Backboard	12Gb/s Mini-SAS HD Expander
N.W.	22.5KG
G.W.	27KG



24-bay, 3.5" HDD Cage
2 x USB 2.0



12-bay, 3.5" HDD Cage
7 x Half Height and Full Length
1+1 CRPS



Support M/B : EEB (12"x13")

Middle: 3x 120mm (T=38mm),
PWM, Hot-swap Fan

ZW06701



Rack server >>>

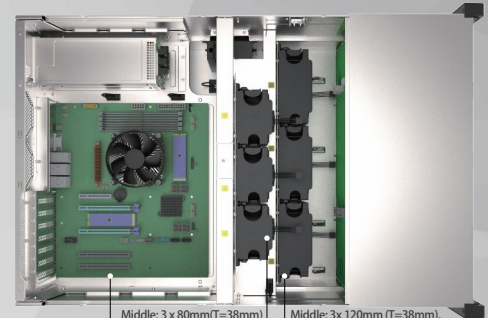
Model	ZW06701
Motherboard	M/B CEB (12"x10.5")
Dimensions	687 x 436 x 263 (mm)
Storage	48 x 3.5" Hot-swap HDD(4 x 12-bay HDD cage)
Power Supply	1+1 CRPS
Indicator light	1 x Power Status, 1 x LAN Activity, 1 x Health, 1x UID
I/O	1 x Power On/Off, 1 x UID, 2 x USB2.0
Safety device	Intrusion Switch
Cooler	Middle: 3 x 120mm (T=38mm), PWM, Hot-swap. 3 x 80mm (T=38mm), PWM, Hot-swap.
Expansion Slot	7 x Full Height and Full Length
HDD Backboard	12Gb/s Mini-SAS HD Expander
N.W. / G.W.	25KG / 30KG



36-bay, 3.5" HDD Cage
2 x USB 2.0



12-bay, 3.5" HDD Cage
7 x Half Height and Full Length
1+1 CRPS

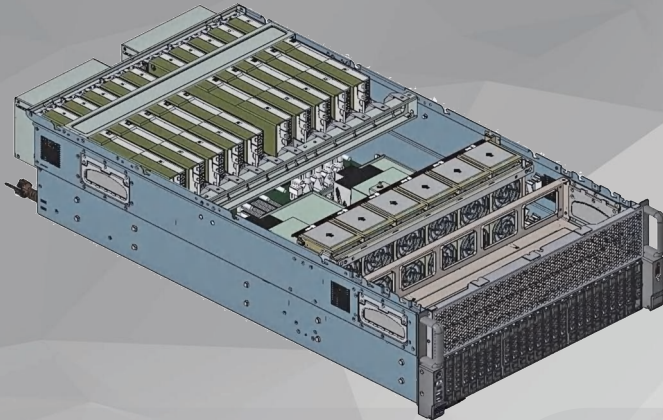


M/B CEB (12"x10.5")

Middle: 3 x 80mm(T=38mm)
PWM, Hot-swap Fan

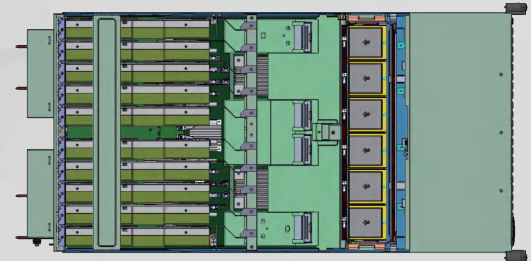
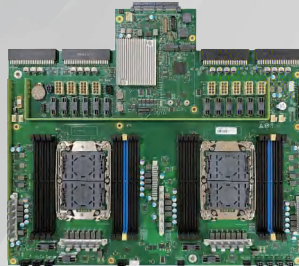
Middle: 3x 120mm (T=38mm),
PWM, Hot-swap Fan

4U8/10GPU Solution



Rack server >>>

Model	SYS-4U8/10 GPU
Platform	Intel Whitely, Intel Eagle Stream, Intel Birch Stream
Motherboard	Super micro MBD-X11DPI-N
Memory Capacity	16 DIMM slots
Dimensions	832.0*436.0*175.0mm
Material	1.2mm SGCC
Storage	12*3.5"SAS/SATA3.0 Hot-swap Module 2*2.5"SAS/SATA3.0 Hot-swap Module
Power Supply	4*CRPS
Backboard	12 LFF SATA/SAS 12 LFF Tri-mode
Fan shock protection	The central fan in the chassis is designed with shock-absorbing structure
Cooler	Middle12*6056
I/O	PowerButton,UID Button, Reset Button, USB3.0*2(OPTION),VGA*1(OPTION)
Safety device	1 x Power Status, 1 x HDD Activity, 2 x LAN Activity, 1 x UID
Expansion Slot	8 x Full Height and Full Length,Supports 21 half-high PCI or PCI-E expansion cards



LGA4677 Single Socket CPU cooler



Support 4th Gen
Intel® Xeon® processors

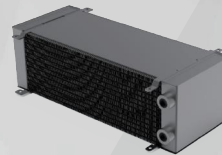
LGA4677 Dual Socket CPU cooler



- TDP surpassed 900W
- Smart speed control
- Tuned Blades
- Noise level < 40dBA

4U Server & Workstation AIO Cooler >>>

Socket Compatibility	Intel LGA4677
Pump Outline Dim	118.0x78.0x35.0mm/118.0x92.4x35.0mm
Rating voltage	DC 12.0V
Operating Voltage Range	DC8~13.8V
Starting voltage	≤ 7V
Rating current	0.20A
Power consumption	4.2W
Pump Speed (100%)	3200RPM±10%
Type Of Pump Bearing	Zirconia ceramic bearing+ zirconia ceramic shaf
Pump Flow	165L/h(3200RPM)
Pump Head	1.35 mH2O(2700RPM)
Size of Pump Lead Wire	UL1061#26AWG
Length of Pump Lead Wire	250±10mm
Power Connector of Pump	2510-3Pin Black
Radiator Specification	360mm Aluminum: 394*120*27mm
Pipe Material	TEF
Thermal Conductive Paste	5.3 w.m/k
Thermal Design Power	900W Thermal Resistance<0.06°C/W



Also available in **scalable** processors and **80mm 2U** standard AIO



AL MORDOR TECHNOLOGY (HK) CO., LIMITED

Website: www.almordor.com

TEL: +86 400-807-8872

